

ClassicalTexas.com  
A proud CAN sponsor  
More than 3,000 hits per  
day that can see your ad!



Approximate  
Distribution  
**5,000 +**

Visit Cooperative Arts News Web Site at:  
<http://www.dacelloman.com/CANoticePubs.html>

**CAN member:** Cedar Valley College Family Music Theatre  
**Contact:** Jonna Fernandez ([jfernandez@dcccd.edu](mailto:jfernandez@dcccd.edu))



## CVC's Family Music Theatre announces auditions for "Titanic"

Forget the sunscreen, spending hours in front of the TV or getting eaten up by mosquitoes this summer. Instead, try something a little out of the ordinary. Cedar Valley College's (CVC) Family Music Theatre will hold auditions for its production of "Titanic" on May 14–15. The production boasts a large cast of over 40 named roles, featuring many cameo solo opportunities and spectacular featured chorus numbers.

A total of 1,517 men, women and children lost their lives when the Titanic sank on April 15, 1912. "Titanic" the musical is based on the factual story of the ship's officers, crew and passengers, as well as the causes and conditions of the quintessential disaster of the 20th century.

Individuals who plan to audition for "Titanic" should be prepared to sing the best 16 measures from a Broadway musical piece—a piano accompanist will be provided. In addition, those who want to be considered for principal roles should expect to provide a cold reading from the script. A minimal, general movement audition will be also be held.

All auditions will be held in the Performance Hall on the CVC campus, located at 3030 N. Dallas Ave. in Lancaster. Auditions will begin at 7 p.m. and no appointment is necessary.

"Titanic" is scheduled for weekend performances June 22–30. For more information, contact CVC Family Music Theatre director, Sam Germany, at 972-860-8134 or [sgermany@dcccd.edu](mailto:sgermany@dcccd.edu).

**Cedar Valley College**  
3030 North Dallas Avenue – Lancaster, Texas 75134

**CAN member:** Fine Arts Chamber Players

**Contact:** Habib Lorient-Bettaieb ([music@fineartschamberplayers.org](mailto:music@fineartschamberplayers.org))

## Violin Prodigy Inaugurates CHARLES BARR MEMORIAL CONCERTS

Fine Arts Chamber Players' Bancroft Family Concerts in the Dallas Museum of Art presents violin virtuoso Shannon Lee in the inaugural Charles Barr Memorial Concert on Saturday, May 19 at 3:00 PM. The museum is located at 1717 N. Harwood in the Dallas Arts District. Admission to the concert is free to the public and requires no reservations. Auditorium doors open at 2:30 PM for the 3:00 PM concert. For more information, please call 214.520.2219 or visit [www.fineartschamberplayers.org](http://www.fineartschamberplayers.org).



*Shannon Lee*

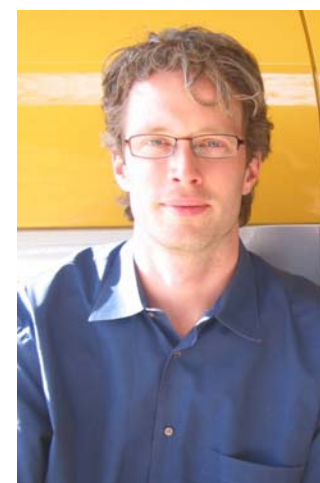
Ms. Lee accompanied by pianist Yurie Iwasaki will perform music by Bach and Franz Waxman's fiendishly difficult Carmen Fantasy. In 2005, 12-year-old Shannon Lee from Plano, TX made a stunning orchestral debut with the Dallas Symphony Orchestra at the Meyerson Symphony Center and performed the Barber Violin Concerto on the DSO's Texas Tour. Following this tour, she was immediately engaged for solo performances with the Eugene (Oregon) Symphony and the Charlotte (NC) Symphony. During the spring of 2007, Shannon will record a solo CD for Telarc International to be released in January of 2008. Ms. Lee studies violin with Jan Mark Sloman, Principal Associate Concertmaster of the Dallas Symphony Orchestra. Ms. Lee has won the top prize in the American String Teachers Association National Competition, the Kingsville Competition, the Bayard H. Friedman Award for Outstanding Student in Performing Arts, the Texas' Young Master Scholarship, the Asian American Alliance for the Arts Outstanding Achievement Award and a Silver Medal in the Stulberg International String Competition.



*Yurie Iwasaki*

Fine Arts Chamber Players has established this annual tribute to Cleveland Orchestra bassist and Dallas native Charles Barr who lost his life in August, 2006 in a bicycle accident. Born in Dallas, Charles Barr attended Cistercian Preparatory School and graduated from Jesuit Preparatory School. He graduated from the Curtis Institute of Music in Philadelphia and at the young age of 27 became a member of the renowned Cleveland Orchestra. Only 31 years old at the time of his death, Charles Barr was the son of recently-retired Dallas Symphony Orchestra Principal Oboist Eric Barr and his wife Catherine Barr, Texas Winds founder and oboist with The Dallas Opera Orchestra. Each year, this concert as part of the Bancroft Family Concerts, will feature a rising North Texas musical star in recital.

The Bancroft Family Concerts series is made possible by Sue and Christopher Bancroft. Season sponsors include The Arts District Foundation, TACA, the City of Dallas Office of Cultural Affairs (OCA), and the Texas Commission on the Arts. Additional support is provided by Catherine and Eric Barr, the Dallas Museum of Art, WRR Classical 101 FM, and the People Newspapers.



*Charles Barr*

For over a quarter of a century, FACP has presented free chamber music programs for the enrichment of North Texas area residents. Concerts annually showcase over fifty outstanding Metroplex professional musicians drawn from the Dallas Symphony Orchestra, The Dallas Opera Orchestra, the Fort Worth Symphony, and faculties of leading area music schools. In addition to the free Bancroft Family Concerts, FACP presents the free Basically Beethoven Festival in July. Each year, FACP's educational outreach programs - Dream Collectors and Community Classics - provide over 200 free events in area public schools.

CAN member: ClassicalTexas.com  
 Contact: Laurel Ornish ([laurel@classicaltexas.com](mailto:laurel@classicaltexas.com))

*ClassicalTexas.com*<sup>TM</sup>

[www.classicaltexas.com](http://www.classicaltexas.com)

**LAUREL ORNISH INTERVIEWS PIANIST MICHAEL HAWLEY,  
 Winner of the International Piano Competition for Outstanding Amateurs**

Listen to or download the interview at [www.classicaltexas.com](http://www.classicaltexas.com)



Michael Hawley today



In 2002, he tied for first prize in the competition with Victoria Bragin

**Dr. Hawley will be returning to Fort Worth to give a recital on May 25 at 6:00 p.m. that will be webcast at [www.cliburn.org](http://www.cliburn.org), in advance of this year's Amateur Competition presented by the Cliburn Foundation, which runs May 28-June 3.**

**He talks with Laurel about how receiving first prize in the competition (along with co-winner, Victoria Bragin) has affected his life. Also the right-brain/left-brain relationship between playing piano and his full-time career, which is with the Media Laboratory at M.I.T. in Cambridge, Massachusetts.**

**In addition, they discuss what it was like to be a juror for the 2004 competition, and how he developed his dual interests of high-tech and high-touch.**

*ClassicalTexas.com* is the classical music and arts website created by award-winning, Dallas-based classical announcer/arts journalist Laurel Ornish.

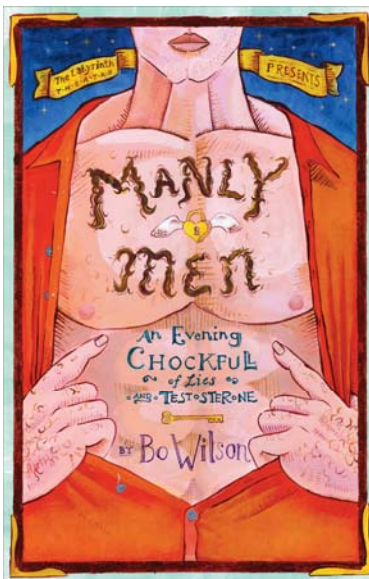
**For information about ClassicalTexas.com, or to advertise your arts organization or business on the site, call (214) 363-7372, or e-mail [laurel@classicaltexas.com](mailto:laurel@classicaltexas.com)**

**CAN member:** The Labyrinth Theatre  
**Contact:** Laurel Ruff ([laurelruff@labyrinththeatre.org](mailto:laurelruff@labyrinththeatre.org))



## The Labyrinth Theatre Presents *Manly Men*

The Labyrinth Theatre presents *Manly Men: An Evening Chockfull of Lies and Testosterone* by Bo Wilson. This is the comic story of a hapless fellow named Harold who is in search of the secret of male-female relations; the one truth that will finally allow him to seek romantic fulfillment . . . and he'll listen to pretty much anyone with a theory!



### **Manly Men**

#### **An Evening Chockfull of Lies and Testosterone**

Written by Bo Wilson  
 Directed by Kevin Ash

**Cast:** Lee Irving\*, Marisa Diotalevi, Andy Mullins (\* indicates member of Actors' Equity Association)

**When:** April 26 – May 19  
 Thursday through Saturday evenings 7:30 pm, Saturday matinees 3:00 pm

**Special Preview & Relationship Forum** April 20<sup>th</sup> 7pm

**Where:** The Labyrinth Theatre – 1400 W. Arapaho Rd. (at Coit), Richardson, TX 75080

**Cost:** **Tickets range from \$12 to \$25.** Discounts for seniors, students and groups are available. Patrons who also make a tax-deductible contribution to The Labyrinth Theatre receive many additional benefits, such as reserved seating and invitations to private dinners and receptions.

**For more information,** visit The Labyrinth Theatre web site at [www.TheLabyrinthTheatre.org](http://www.TheLabyrinthTheatre.org), contact The Labyrinth Theatre Box Office at (972) 231-1012, or go to the Box Office at Arapaho United Methodist Church, 1400 W. Arapaho Road (at Coit), Richardson, TX 75080.

**The Labyrinth Theatre** is a professional, not for profit theatre founded to promote philosophical, ideological and theological thought and discussion. The Labyrinth Theatre operates under a Small Professional Theatre Contract with Actors' Equity Association.

CAN member: The Contemporary Chorale  
 Contact: Diane Downey ([dmdowney@verizon.net](mailto:dmdowney@verizon.net))



*The Contemporary Chorale*  
*A Women's Chorus*  
 presents  
*An Afternoon of Song*

May 12, 2007  
 3:00 P.M.

*Boogie on Down*



*Come Fly With Me*

Embraceable You



*Close to You*



*Something Latin*

Richardson Civic Center  
 411 W. Arapaho  
 Richardson, TX 75080  
 Tickets \$10

For tickets or more information  
 call 972-999-1335  
[www.contemporarychorale.org](http://www.contemporarychorale.org)

**CAN member:** Orpheus Chamber Singers  
**Contact:** Kenton Kravig ([administrator@orpheuschambersingers.org](mailto:administrator@orpheuschambersingers.org))



Donald Krehbiel, Artistic Director

*"...the area's finest indigenous musical ensemble..."*

Scott Cantrell, The Dallas Morning News

## Orpheus Chamber Singers Presents **Sounds & Spaces**

**Sunday, 20 May 2007, 8.00pm – Guadalupe Cathedral, 2215 Ross Avenue at Pearl, Dallas**

### TICKET PRICES:

**Single Tickets: \$22 Regular / \$18 Seniors / \$10 Students (thru college)**

**Priority Seating Single Tickets: \$30 Regular / \$25 Senior / \$15 Students**  
 (near the front of the venue)

**Call 214.546.1252 or visit [www.orpheuschambersingers.org](http://www.orpheuschambersingers.org)**

Experience the unique architecture and acoustics of Guadalupe Cathedral as Orpheus performs in "surround sound" in this historic space. This eclectic program will include sacred and secular works that span nine centuries, performed from the grand balcony, from the aisles and from the high and side altars. This unique performance will include:

Tomás Luis de Victoria: selections from *Officium Defunctorum* [Mass for the Dead] (1605)

Norwegian Folk Melody, arr. Pedersen: *Jesus Gjør Meg Stille*

Norwegian Folk Hymn, arr. Pedersen: *Kilden*

Plainchant: *Ave Maris Stella*

Trond Kverno: *Ave Maris Stella* (1976)

Henry Purcell / Sven David Sandström: *Hear My Prayer* (1680 / 1986)

Sid Robinovitch: *Prayer Before Sleep* from Talmud Suite

Francis Poulenc: *Mass in G* (1937)

Orpheus is celebrating its twelfth season of bringing exceptional choral music to the metroplex, performed with professional polish and joyous spirit. We aim to enrich, inspire and educate by providing exceptional performances of traditional and innovative choral music from the past five centuries.

– PROGRAM SUBJECT TO CHANGE –

Orpheus Chamber Singers  
Is Sponsored in Part By:



**CAN member:** New Philharmonic Orchestra of Irving  
**Contact:** Sue Wilson ([raferw.rs@verizon.net](mailto:raferw.rs@verizon.net))

New  
 Philharmonic  
 Orchestra  
 of Irving

**May 22, 2007**

8 pm concert Carpenter Performance Hall  
 Irving Arts Center  
 3333 N. MacArthur Blvd. north of Airport Freeway  
 Irving TX 75062



## **Latin Passion**

Dr. German Gutiérrez, conducting



Verdi

La Forza del Destino Overture

Tchaikovsky

Variations on a Rococo Theme, Op. 33  
 Jesús Castro-Balbi, cello

Ginastera

Dances from the Ballet Estancia

Brahms

Symphony No. 2 op. 73 in D Major

~~~~~  
 New Philharmonic Orchestra of Irving 2006-2007 Season of Change presents *Latin Passion* featuring cellist Jesus Castro-Balbi and conducted by Dr. German Gutiérrez on Tuesday, May 23, 2007 at 8:00 p.m. at the Irving Arts Center, 3333 N. MacArthur Blvd. north of Airport Freeway.

### ~~~~~ *Latin Passion*

Spice up your evening with the Overture to La Forza del Destino, Verdi's opera based on a Spanish drama, then relish Tchaikovsky's Variations on a Rococo Theme, featuring cellist Dr. Jesus Castro-Balbi. Savor the exotic Estancia Dances of Argentinean composer Albert Ginastera before a sweet repast of Brahms' Second Symphony. Tickets: \$15 general admission, \$10 seniors, \$8 students

For tickets, call the Irving Arts Center Box Office at 972/252-2787.

Check out our website at <http://www.home.earthlink.net/~youngj1/npoi.htm>

Contact person for more information:

Sue Wilson at [raferw.rs@verizon.net](mailto:raferw.rs@verizon.net) or at 972/253-5713

CAN member: Orpheus Chamber Singers  
 Contact: Kenton Kravig ([administrator@orpheus Chambersingers.org](mailto:administrator@orpheus Chambersingers.org))

# Auditions

## Auditions for the Orpheus Chamber Singers 2007/2008 Roster will be held on Saturdays, May 26th and June 2nd

Orpheus, a professional, all-paid, 24-voice chorus, seeks well-rounded musicians who are committed to the choral art with extensive experience singing in fine choirs. Successful candidates will have:

- Excellent vocal training
- Above-average *sight singing* skills
- Sufficient understanding of German and Latin *pronunciation*

The 20-minute audition will include:

- Vocalization
- Sight Singing
- Rhythm Test
- Two solos of your choosing which emphasize your solo vocal ability and musicianship

An accompanist will be provided.

*– all voice parts are needed –*



*Donald Krehbiel, Artistic Director*

*“...the area’s  
 finest  
 indigenous  
 musical  
 ensemble...”*

The Dallas Morning News

*Please contact*

**Artistic Director  
 Donald Krehbiel  
 by phone at  
 214.528.3990x114**

*or email*  
**dkrehbiel@  
 dallasuu.org**

**to inquire further  
 or schedule an  
 audition time**



**CAN member:** Rhythm Junkies

**Contact:** Karen Osborn Stanford ([dancerkos@verizon.net](mailto:dancerkos@verizon.net))



Jason Janas

**No excuses. Just Tap!**

**Join the North Texas Tap Community as we celebrate  
National Tap Dance Day Saturday, May 26.**

The event includes a banquet and floor show featuring the tap talents of local soloist and dance companies with Featured Guest Artist Jason Janas. Festivities begin at 6pm with reception, dinner, floor show and much more!

**Doubletree Hotel  
4099 Valley View, Dallas  
Midway and 635**

\$50 per guest for dinner and floor show

\$65 per guest for dinner, floor show and commemorative t-shirt "No excuses. Just tap!"

For more information and registration form

[www.legacytap.com](http://www.legacytap.com) [www.rhythmjunkies.org](http://www.rhythmjunkies.org)

Call 972-412-8300 email [dancerkos@verizon.net](mailto:dancerkos@verizon.net)

CAN member: Irving Chorale  
Contact: Pam Engman ([bahbeee@msn.com](mailto:bahbeee@msn.com))

## THE IRVING CHORALE 20th ANNIVERSARY SEASON



Enjoy an evening on Broadway featuring the concert version  
of this famous Tony Award winning musical.

Accompanied by the Mike Drake band and jazz ensemble.

Don't miss our spectacular platinum season finale!

Saturday • May 26, 2007 • 8:00 p.m.

Carpenter Hall • Irving Arts Center

For tickets or more information, please visit our website at [www.irvingchorale.org](http://www.irvingchorale.org) or call 972.252.2787

**CAN member:** Chamberlain Performing Arts  
**Contact:** Sherry Shults ([sherryshults@comcast.net](mailto:sherryshults@comcast.net))



**Chamberlain Performing Arts Hosts  
 10<sup>th</sup> Annual Musical Theatre Workshop  
 And Launches *"The King and I"* in Six Days!**

Chamberlain Performing Arts offers its 10<sup>th</sup> annual musical theatre workshop May 29<sup>th</sup> through June 3<sup>rd</sup>. Over the past ten years, Chamberlain Performing Arts' Musical Theatre Artistic Directors Ginny Lamoureux and Shannon Werthmann have combined their formal training and successful careers in dance, theatre and voice creating the foundation for a program that offers the highest caliber of performing arts instruction in the Dallas Fort Worth area. Students of the 2007 Musical Theatre workshop will complete a fun week jam-packed with professional tips of the trade and the opportunity to star in their adaptation of *"The King and I"* with lights, sound and costuming at the Charles W. Eisemann Center, Sunday, June 3, 7:30pm. Ms. Lamoureux, theatre and voice director says, "We love having participants of all ages and levels of experience. Our goal is help each of them reach their potential in a nurturing, caring environment. By the end of the week we've all worked really hard, but we have lots of fun in the process."

Aspiring performers may enroll by audition only, which will be held Sunday, April 15, from 1:30-3:30 for ages 8-12 and from 4:00-6:00pm for ages 13 and older. For additional information please call the Chamberlain studio at 972-985-1374 or pick up a brochure at 3003 West 15<sup>th</sup> Street, Plano, TX. Workshop tuition is \$450 and includes two tickets to the Eisemann Center workshop performance on June 3<sup>rd</sup> and two tickets the Chamberlain Musical Theatre Company's *"More Trouble in Paradise,"* scheduled for June 22-24 at Plano's Courtyard Theatre.

About Chamberlain Performing Arts...

Chamberlain Performing Arts, formerly Chamberlain Ballet, is a unique nonprofit arts organization serving North Texas. In its 23rd season, it features a Concert Ballet Company performing classical, neoclassical and contemporary ballet, a Musical Theatre Company presenting original stage productions, and community outreach programs, including the Shining Stars, a creative movement class for children with special needs; the Douglass Dancers, an after-school dance program for underserved children in Plano; and similar after-school programs in McKinney and Frisco. For additional information concerning Chamberlain Performing Arts visit:

[www.chamberlainperformingarts.com](http://www.chamberlainperformingarts.com).

**CAN member:** The Labyrinth Theatre  
**Contact:** Laurel Ruff ([laurelruff@labyrinththeatre.org](mailto:laurelruff@labyrinththeatre.org))

## The Labyrinth Theatre Offers Youth Summer Theatre Camp

The Labyrinth Theatre is offering a Summer Youth Theatre Camp for students entering grades 6-12. This three week camp will offer professional training in the different disciplines of theatre and the application of that training in the production of the musical *Dear Edwina*, directed by Stephanie Wulfe Epstein.

**Who:** Students entering Grades 6-12

**When:** July 16 – August 3, 2007 1-5pm  
 Performances August 2-5 at 7pm, Aug. 4 & 5 at 2pm

**Where:** The Labyrinth Theatre  
 1400 W. Arapaho Rd.  
 Richardson, TX 75075

**Cost:** \$495 if registered by May 1<sup>st</sup>, \$595 if registered after May 1<sup>st</sup>  
 \$250 deposit required with registration, remainder due by July 1<sup>st</sup>.

**To Register:** Call 972-231-1012, or download a registration from [www.TheLabyrinthTheatre.org](http://www.TheLabyrinthTheatre.org)

### Show Information :

**Dear Edwina Junior**  
 Book and Lyrics by Marcy Heisler  
 Music by Zina Goldrich

Follow the adventures of advice-giver extraordinaire, Edwina Spoonapple as she directs the kids in the neighborhood in production number after hilarious production number in her "Advice-A-Palooza" extravaganza. Written in the style of *Schoolhouse Rock Live!* and *You're A Good Man Charlie Brown*, *Dear Edwina Junior* is the perfect girl power musical for a new generation.

**Tickets:** visit our website for ticket information

**The Labyrinth Theatre** is a professional, not for profit theatre founded to promote philosophical, ideological and theological thought and discussion. The Labyrinth Theatre operates under a Small Professional Theatre Contract with Actors' Equity Association.

CAN member: The Labyrinth Theatre  
 Contact: Laurel Ruff ([laurelruff@labyrinththeatre.org](mailto:laurelruff@labyrinththeatre.org))



## THE LABYRINTH THEATRE Announces Its 2007-08 SEASON!

The Labyrinth Theatre announces its fourth season of thought provoking and intellectually challenging theatre with a season of perspectives:

### **TUESDAYS WITH MORRIE** by Jeffrey Hatcher and Mitch Albom August 23 – September 15, 2007

*Tuesdays with Morrie*, is the autobiographical story of Mitch Albom, an accomplished journalist driven solely by his career, and Morrie Schwartz, his former college professor. Sixteen years after graduation, Mitch happens to catch Morrie's appearance on a television news program and learns that his old professor is battling Lou Gehrig's Disease. Mitch is reunited with Morrie and what starts as a simple visit turns into a weekly pilgrimage and a last class in the meaning of life. **This production will benefit a charity committed to finding a cure for ALS.**

### **A BROADWAY CHRISTMAS CAROL** by Kathy Feininger November 15 – December 8, 2007

*A Broadway Christmas Carol* is a delightful and unexpected mix of show tune song parodies and Charles Dickens' classic story of the redeemed miser, Ebenezer Scrooge. "A little song, a little dance, a little egg nog down your pants!"

### **ROCKET MAN** by Steven Dietz February 7 – March 1, 2008

*Rocket Man* is a serious comedy about the road not taken. Donny Rowan has placed everything he owns on his lawn, along with a sign that reads: "Here's My Life. Make An Offer." He cuts a skylight in his attic and sits there in his reclining chair, staring at the stars. Somewhere in the universe, Donny believes, is a place where all the roads we never chose converge. ROCKET MAN explores one man's obsessive desire to find this "parallel world"-and the profound effect of his decision on his family and friends.

### **PERIMETERS** *World Premiere* by Kevin L. Ash and Susan Cummins April 24 – May 17, 2008

*Perimeters*: A quirky comedy with a soul. What if you only had one life to live but messed it up only to find you could have another shot at life as someone else, but that person had to suffer in your place ... would you take it? *Perimeters* is about living life on the edge, and finally finding your way back to the center. This **Original Premier Production** will be your opportunity to see a new play as part of our program to take one production to New York City each year.

**The Labyrinth Theatre** is a professional, not for profit theatre founded to promote philosophical, ideological and theological thought and discussion. The Labyrinth Theatre operates under a Small Professional Theatre Contract with Actors' Equity Association.

**Cost: We offer two different prices for season tickets (for all 4 shows): \$75.00** for Thursday evenings and Saturday matinees, and **\$90.00** for Friday and Saturday evenings. Gifts of \$300 or more entitle donors to two season tickets valued at \$180.00. Individual tickets range from \$10 - \$25.

**For more information**, visit The Labyrinth Theatre web site at [www.TheLabyrinthTheatre.org](http://www.TheLabyrinthTheatre.org), contact The Labyrinth Theatre Box Office at (972) 231-1012, or go to the Box Office at Arapaho United Methodist Church, 1400 W. Arapaho Road (at Coit), Richardson, TX 75080.

**CAN member:** The Garland Summer Musicals  
**Contact:** Patty Granville ([pgranvil@ci.garland.tx.us](mailto:pgranvil@ci.garland.tx.us))



## Garland Summer Musicals 25<sup>th</sup> Anniversary Season Opens With *Hello Dolly!*

The Garland Summer Musicals will open its 25<sup>th</sup> Anniversary Season with the Spectacular Broadway Hit....***Hello Dolly*** will feature Patty Granville in the title role as Dolly Levi and John McCoy as Horace Vandergelder. *Hello Dolly* is based on Thornton Wilder's *The Matchmaker*. It's glittering with song and dance and features a dazzling score with favorites such as: *It Only Takes a Moment*; *Before the Parade Passes By*; *Put On Your Sunday Clothes*; and the title song *Hello Dolly!* Performance dates are June 15, 16, 22, 23 at 8PM and June 17, 24 at 2PM.

Steven Jones will portray Cornelius Hackl and Deanna Sarkar as Irene Molloy. Denise Pacific will appear as Minnie with Patrick Pevehouse as Barnaby. Others featured in the cast will be: Jack Perl as Ambrose; Melissa Farmer as Ermengarde; Steve Beene as Rudolph; Linda Frank as Ernestina and Hamp Holcomb as The Judge. Ensemble includes: Carlos Gomez, Ian McNeny, Dustin Norris, Todd Aragon, Maurice Johnson, Steve Edwards, Kelly McCain, Michelle Hames, Jamie Singbusch, Summer Kenny, Rachel Rice, Katie Mitchell, Brittany Wooten, Aileen McDermott, Ashley Cutright, Mary Jerome, Amanda Walker, Rachel Tamez, Marty Scott, William West, Christopher McCrae, Bracken Lovelace.

The 2007 GSM will be under the helm of former New York Director, Buff Shurr who is returning for his 25<sup>th</sup> Season. Patty Granville is the Producer and Jeff Crouse is the Musical Director. Choreographer for *Hello Dolly* is Vicki Squires. Sets will be designed by Kelly Cox and Costume Design is by Michael Robinson and the Dallas Costume Shoppe. Alan Hanna is the Stage Manager, Susan A. White will be the Lighting Designer and Props Design is by Lynn Mauldin. Set Construction is by Joe Murdock and Andy Redmon will be the Technical Director.

All performances are held in the Main Auditorium of the Granville Arts Center. Call 972-205-2790 for reservations. Tickets are \$19-\$24 with special corporate and group rates available. Special college credit in the form of scholarships will be available through Richland College for anyone cast in the show or wishing to do technical work.

These productions are funded in part by the GCAC, Inc.; GSM Guild; GP&L; Time Warner Cable, Ecolab, Gordon & Alice Stone; Louis Gene Garner and the Dallas Morning News & WFAA-TV. Visit the GSM website [www.garlandsummermusicals.org](http://www.garlandsummermusicals.org)

## *What is Cooperative Arts News?*

**The Mission:** The *CAN* organization was created for the purpose of helping cooperative member arts organizations build audiences by supporting each other. *CAN* will send notifications to list members with news of member organizations' upcoming events and other arts news of interest.

### **The Rules:**

- 1) Since this is a "cooperative" of arts organizations supporting each other, member groups who would like to post notices, agree to "receive" notifications from other member groups in return. Individuals will have the option at any time to "opt-out" if they choose not to receive future notifications by e-mailing the list manager.
  - 2) In order to preserve the integrity and quality of the postings to this list and to prevent any unwanted "Spamming", all notifications that member groups want to send through this notification list must come through the list manager. Groups simply send an e-mail notification to the list manager with a descriptive write-up and it will be sent. If there are multiple notifications that need to go out, they may be grouped together in "digest" format to reduce the number of e-mails that are sent to the list.
- If at anytime, you would like to be removed from this e-mail list or if you are a new organization that would like to join, please e-mail the list manager and your request will be acted upon in a timely manner.

As always, thank-you for supporting the performing arts in the DFW area!

Regards,

David Witherspoon

List Manager

[d-witherspoon@ti.com](mailto:d-witherspoon@ti.com)

**Approximate Distribution: over 5,000 and growing!**

## Current CAN Affiliated Arts Organizations

| <b>Organization Name:</b>                           | <b>Contact:</b>        | <b>Contact e-mail Address:</b>                                                               | <b>Web Address:</b>                                                                                             |
|-----------------------------------------------------|------------------------|----------------------------------------------------------------------------------------------|-----------------------------------------------------------------------------------------------------------------|
| <b>A</b>                                            |                        |                                                                                              |                                                                                                                 |
| Akeru Ensemble                                      | Heather Schmidt        | <a href="mailto:MusicOPI@aol.com">MusicOPI@aol.com</a>                                       | <a href="http://www.akeruensemble.com/">http://www.akeruensemble.com/</a>                                       |
| Aria Chamber Chorus                                 | Kristin Moore          | <a href="mailto:webmaster@AriaChamberChorus.com">webmaster@AriaChamberChorus.com</a>         | <a href="http://www.ariachamberchorus.com/">http://www.ariachamberchorus.com/</a>                               |
| Arts District Chorale                               | Tonya Assid            | <a href="mailto:dfwearlymusic@yahoo.com">dfwearlymusic@yahoo.com</a>                         | <a href="http://www.artsdistrictchorale.org/index.htm">http://www.artsdistrictchorale.org/index.htm</a>         |
| <b>B-C</b>                                          |                        |                                                                                              |                                                                                                                 |
| Calvary Lutheran Church                             | Viktor Anderson        | <a href="mailto:viktor@calvaryftw.org">viktor@calvaryftw.org</a>                             | <a href="http://www.calvaryftw.org/">http://www.calvaryftw.org/</a>                                             |
| Canyon Creek Presbyterian Church                    | David Witherspoon      | <a href="mailto:d-witherspoon@ti.com">d-witherspoon@ti.com</a>                               | <a href="http://www.canyoncreekpres.org/">http://www.canyoncreekpres.org/</a>                                   |
| Chamber Music International                         | David Witherspoon      | <a href="mailto:admin@chambermusicinternational.org">admin@chambermusicinternational.org</a> | <a href="http://www.chambermusicinternational.org/">http://www.chambermusicinternational.org/</a>               |
| Chamberlain Performing Arts Musical Theatre Company | Sherry Shults          | <a href="mailto:sherryshults@comcast.net">sherryshults@comcast.net</a>                       | <a href="http://www.chamberlainperformingarts.com">http://www.chamberlainperformingarts.com</a>                 |
| ClassicalTexas.com                                  | Laurel Ornish          | <a href="mailto:laurel@classicaltexas.com">laurel@classicaltexas.com</a>                     | <a href="http://www.ClassicalTexas.com">http://www.ClassicalTexas.com</a>                                       |
| Contemporary Chorale                                | Diane Downey           | <a href="mailto:dmdowney@verizon.net">dmdowney@verizon.net</a>                               | <a href="http://www.contemporarychorale.org/">http://www.contemporarychorale.org/</a>                           |
| Creative Arts Jazz Orchestra                        | Pat Fox                | <a href="mailto:pat.foxtx@comcast.net">pat.foxtx@comcast.net</a>                             | <a href="http://www.creativeartsalliance.org">http://www.creativeartsalliance.org</a>                           |
| CVC Family Music Theatre                            | Jonna Fernandez        | <a href="mailto:jfernandez@dcccd.edu">jfernandez@dcccd.edu</a>                               | <a href="http://www.cedarvalleycollege.edu">http://www.cedarvalleycollege.edu</a>                               |
| <b>D-F</b>                                          |                        |                                                                                              |                                                                                                                 |
| Dallas Bach Society                                 | Tonya Assid            | <a href="mailto:dallasbachsociety@yahoo.com">dallasbachsociety@yahoo.com</a>                 | <a href="http://www.dallasbach.org/">http://www.dallasbach.org/</a>                                             |
| Dallas Chamber Music Society                        | P Jay Werner           | <a href="mailto:pjay_werner@yahoo.com">pjay_werner@yahoo.com</a>                             | <a href="http://www.dallaschambermusic.org/">http://www.dallaschambermusic.org/</a>                             |
| DART                                                | Tasha Lowery           | <a href="mailto:tlowery@dart.org">tlowery@dart.org</a>                                       |                                                                                                                 |
| Fine Arts Chamber Players                           | Habib Lorient-Bettaieb | <a href="mailto:mu-sic@fineartschamberplayers.org">mu-sic@fineartschamberplayers.org</a>     | <a href="http://www.fineartschamberplayers.org/index.html">http://www.fineartschamberplayers.org/index.html</a> |
| <b>G-H</b>                                          |                        |                                                                                              |                                                                                                                 |
| Garland Summer Musicals                             | Patty Granville        | <a href="mailto:pgranvil@ci.garland.tx.us">pgranvil@ci.garland.tx.us</a>                     | <a href="http://www.garlandsummermusicals.org">http://www.garlandsummermusicals.org</a>                         |
| Giocoso String Quartet                              | David Witherspoon      | <a href="mailto:d-witherspoon@ti.com">d-witherspoon@ti.com</a>                               |                                                                                                                 |
| Greater Dallas Youth Orchestras                     | Chuck Moore            | <a href="mailto:chuck@gdyo.org">chuck@gdyo.org</a>                                           | <a href="http://www.gdyo.org/">http://www.gdyo.org/</a>                                                         |
| Highland Park Chorale                               | Nicky Bell             | <a href="mailto:nickybell@earthlink.net">nickybell@earthlink.net</a>                         | <a href="http://www.hppc.org">http://www.hppc.org</a>                                                           |
| Highlander Concert Series                           | Walter Gast            | <a href="mailto:walter@highlanderconcerts.org">walter@highlanderconcerts.org</a>             | <a href="http://www.highlanderconcerts.org">http://www.highlanderconcerts.org</a>                               |



## Current CAN Affiliated Arts Organizations

| <b>I-J</b>                               |                   |                                                                                                      |                                                                                                       |
|------------------------------------------|-------------------|------------------------------------------------------------------------------------------------------|-------------------------------------------------------------------------------------------------------|
| IISD Fine Arts Faculty                   | Dr. Alfred Green  | <a href="mailto:agreen@irvingisd.net">agreen@irvingisd.net</a>                                       |                                                                                                       |
| Irving Chorale                           | Pam Engman        | <a href="mailto:bahbeee@msn.com">bahbeee@msn.com</a>                                                 | <a href="http://www.irvingchorale.org/">http://www.irvingchorale.org/</a>                             |
| Ivy Camerata Orchestra                   | Elizabeth McCoy   | <a href="mailto:emccoytx@yahoo.com">emccoytx@yahoo.com</a>                                           | <a href="http://www.ivyorchestra.org/">http://www.ivyorchestra.org/</a>                               |
| Jim R. Henderson Garland Chorale         | Jim R. Henderson  | <a href="mailto:jimbets@mindspring.com">jimbets@mindspring.com</a>                                   | <a href="http://garlandchorale.org/home.htm">http://garlandchorale.org/home.htm</a>                   |
|                                          |                   |                                                                                                      |                                                                                                       |
|                                          |                   |                                                                                                      |                                                                                                       |
| <b>K-N</b>                               |                   |                                                                                                      |                                                                                                       |
| The Labyrinth Theatre                    | Laurel Ruff       | <a href="mailto:laurelruff@labyrinththeatre.org">laurelruff@labyrinththeatre.org</a>                 | <a href="http://www.thelabyrinththeatre.org">http://www.thelabyrinththeatre.org</a>                   |
| Lake Music                               | Andrew Fullford   | <a href="mailto:cinfo@lakemusic.org">cinfo@lakemusic.org</a>                                         | <a href="http://www.lakemusic.org">http://www.lakemusic.org</a>                                       |
| Laura Ainsworth-"My Ship Has Sailed"     | Pat Reeder        | <a href="mailto:webmaster@lauraainsworth.com">webmaster@lauraainsworth.com</a>                       | <a href="http://www.lauraainsworth.com">http://www.lauraainsworth.com</a>                             |
| The Living Opera                         | Michael Chadwick  | <a href="mailto:MChadwick@thelivingopera.org">MChadwick@thelivingopera.org</a>                       | <a href="http://www.thelivingopera.org/">http://www.thelivingopera.org/</a>                           |
| Lu Mitchell                              | Lu Mitchell       | <a href="mailto:lusviews@comcast.net">lusviews@comcast.net</a>                                       | <a href="http://www.lumitchell.com">http://www.lumitchell.com</a>                                     |
| Lyric Stage                              | Steven Jones      | <a href="mailto:info@lyricstage.org">info@lyricstage.org</a>                                         | <a href="http://www.lyricstage.org">http://www.lyricstage.org</a>                                     |
| New Philharmonic Orchestra of Irving     | Sue Wilson        | <a href="mailto:raferw.rs@verizon.net">raferw.rs@verizon.net</a>                                     | <a href="http://home.earthlink.net/~youngj1/npoi.htm">http://home.earthlink.net/~youngj1/npoi.htm</a> |
| New Philharmonic Chamber Players         | David Witherspoon | <a href="mailto:d-witherspoon@ti.com">d-witherspoon@ti.com</a>                                       |                                                                                                       |
|                                          |                   |                                                                                                      |                                                                                                       |
| <b>O-P</b>                               |                   |                                                                                                      |                                                                                                       |
| Orpheus Chamber Singers                  | Kenton Kravig     | <a href="mailto:administrator@orpheuschambersingers.org">administrator@orpheuschambersingers.org</a> | <a href="http://www.orpheuschambersingers.org/">http://www.orpheuschambersingers.org/</a>             |
| Plano Men of Note Chorus                 | David Wagner      | <a href="mailto:menofnotechorus@aol.com">menofnotechorus@aol.com</a>                                 | <a href="http://www.menofnote.org/">http://www.menofnote.org/</a>                                     |
| Plano Civic Chorus                       | Mary Joyner       | <a href="mailto:majoyner@comcast.net">majoyner@comcast.net</a>                                       | <a href="http://www.planocivicchorus.org">http://www.planocivicchorus.org</a>                         |
| Preston Hollow Presbyterian Church Choir | Sharon Taylor     | <a href="mailto:sharon.taylor@archongroup.com">sharon.taylor@archongroup.com</a>                     | <a href="http://www.phpc.org/">http://www.phpc.org/</a>                                               |
| Pro Musica Chamber Music                 | David Witherspoon | <a href="mailto:d-witherspoon@ti.com">d-witherspoon@ti.com</a>                                       |                                                                                                       |
|                                          |                   |                                                                                                      |                                                                                                       |
|                                          |                   |                                                                                                      |                                                                                                       |
|                                          |                   |                                                                                                      |                                                                                                       |

## Current CAN Affiliated Arts Organizations

| <b>Organization Name:</b>                           | <b>Contact:</b>       | <b>Contact e-mail Address:</b>                                                                 | <b>Web Address:</b>                                                                         |
|-----------------------------------------------------|-----------------------|------------------------------------------------------------------------------------------------|---------------------------------------------------------------------------------------------|
| <b>R-S</b>                                          |                       |                                                                                                |                                                                                             |
| Regal Opera Company                                 | Pam Cochrane          | <a href="mailto:bobcochrane1@comcast.net">bobcochrane1@comcast.net</a>                         | <a href="http://www.regalopera.org/">http://www.regalopera.org/</a>                         |
| Richardson Arts Alliance                            | Pat Fox               | <a href="mailto:pat.foctx@comcast.net">pat.foctx@comcast.net</a>                               |                                                                                             |
| Richardson Community Band                           | George W. Jones       | <a href="mailto:richardsoncommunity-band@comcast.net">richardsoncommunity-band@comcast.net</a> | <a href="http://www.richardsoncommunityband.org">http://www.richardsoncommunityband.org</a> |
| Richardson Symphony                                 | Elizabeth Michel      | <a href="mailto:emichel@richardsonsymphony.org">emichel@richardsonsymphony.org</a>             | <a href="http://richardsonsymphony.org/">http://richardsonsymphony.org/</a>                 |
| Rich-Tones                                          | Marlys Damman         | <a href="mailto:Momzy53@aol.com">Momzy53@aol.com</a>                                           | <a href="http://www.richtones.org/">http://www.richtones.org/</a>                           |
| Rover Dramawerks                                    | Carol M. Rice         | <a href="mailto:carolrice@roverdramawerks.com">carolrice@roverdramawerks.com</a>               | <a href="http://www.roverdramawerks.com/">http://www.roverdramawerks.com/</a>               |
| Rhythm Junkies                                      | Karen Osborn Stanford | <a href="mailto:dancerkos@verizon.net">dancerkos@verizon.net</a>                               | <a href="http://www.rhythmjunkies.org/">http://www.rhythmjunkies.org/</a>                   |
| Sonny Rios Voice Studios                            | Sonny Rios            | <a href="mailto:tenor@sonnyrios.com">tenor@sonnyrios.com</a>                                   | <a href="http://www.sonnyrios.com/index.html">http://www.sonnyrios.com/index.html</a>       |
| <b>T-Z</b>                                          |                       |                                                                                                |                                                                                             |
| Tech Tones                                          | Anne White            | <a href="mailto:anne-white@ti.com">anne-white@ti.com</a>                                       |                                                                                             |
| Texas Camerata                                      | Lee Lattimore         | <a href="mailto:leelatt@gte.net">leelatt@gte.net</a>                                           | <a href="http://www.texascamerata.org">http://www.texascamerata.org</a>                     |
| Theatre Britain                                     | Sue Birch             | <a href="mailto:producers@theatre-britain.com">producers@theatre-britain.com</a>               | <a href="http://www.theatre-britain.com">http://www.theatre-britain.com</a>                 |
| Theatre Three Dallas                                | Kimberly Richard      | <a href="mailto:kimberly@theatre3dallas.com">kimberly@theatre3dallas.com</a>                   | <a href="http://www.theatre3dallas.com/">http://www.theatre3dallas.com/</a>                 |
| Transfigured Nights - Church of the Transfiguration | Greg Alexander        | <a href="mailto:tfn_music@yahoo">tfn_music@yahoo</a>                                           | <a href="http://www.transfiguration.net">http://www.transfiguration.net</a>                 |
| Tuzer Ballet                                        | Charyl McAfee-Duncan  | <a href="mailto:charylmd@sbcglobal.net">charylmd@sbcglobal.net</a>                             | <a href="http://www.tuzerballet.com/">http://www.tuzerballet.com/</a>                       |
| Zion Lutheran Church                                | Sam Eatherton         | <a href="mailto:seatherton@ziondallas.org">seatherton@ziondallas.org</a>                       | <a href="http://www.ziondallas.org/">http://www.ziondallas.org/</a>                         |
|                                                     |                       |                                                                                                |                                                                                             |
|                                                     |                       |                                                                                                |                                                                                             |